



ROUND HILL
CAPITAL

Round Hill Capital

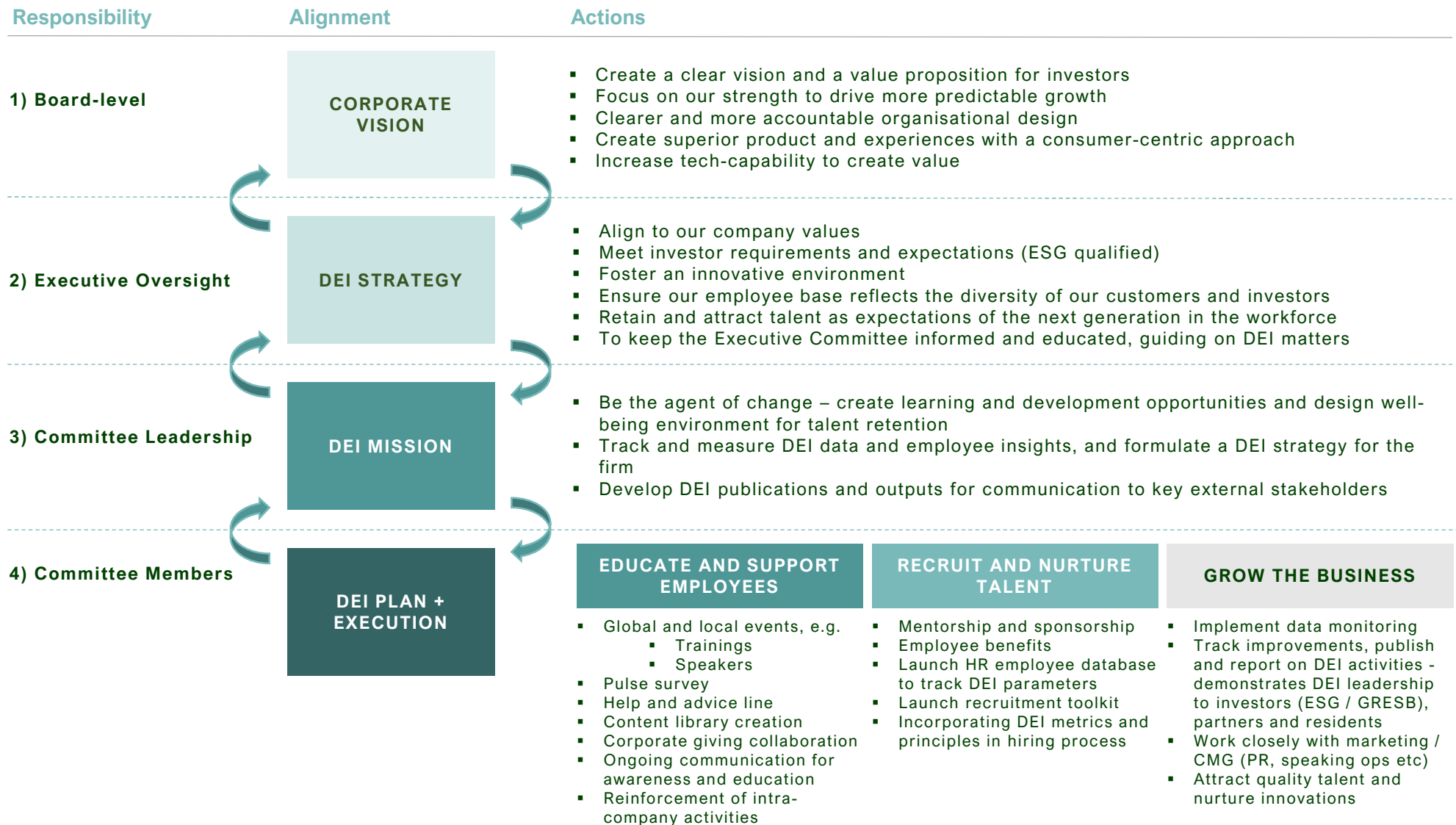
Diversity, Equity and Inclusion



July 2023
Confidential

Mission and Strategy Overview

Round Hill Capital, strives to create a diverse team and inclusive environment supporting effective and healthy employee interactions that enable the achievement of the Groups objectives



Diversity, Equity, and Inclusion Statement

At Round Hill Capital, we recognize that our strength lies in the diversity of our people. We are committed to fostering an inclusive workplace where every individual is valued, respected, and empowered to reach their full potential.

Diversity: We celebrate the richness of cultures, languages, and experiences that our employees bring to our Firm. Embracing diversity in all its forms enriches our perspectives and strengthens our ability to make informed decisions in the dynamic landscape of European real estate.

Equity: We are dedicated to creating an equitable environment where equality and justice are paramount. We believe in providing equal opportunities for professional development, mentorship, and career advancement. Through transparent processes, supportive policies, and ongoing education initiatives in DEI matters, we strive to eliminate barriers that hinder the progress of talented individuals within our organization.

Inclusion: Inclusivity is not just a buzzword; it is our commitment. We foster a workplace where every voice is heard, where differences are respected, and where collaboration knows no boundaries. By enabling an inclusive culture, we harness the collective power of our diverse team, driving innovation and enabling us to better serve the needs of our clients, partners, and the communities in which we operate.

Our Commitment: We pledge to continually educate ourselves and challenge biases within our industry. We are committed to understanding and adapting to the needs of our employees and continually learning what matters to them most. We actively engage with our employees, clients, and stakeholders to understand their unique perspectives. Through ongoing training, open dialogue, and strategic initiatives, we are dedicated to cultivating a workplace that mirrors the rich tapestry of our society.

Together, we stand united in our commitment to building a diverse, equitable, and inclusive environment where every individual can thrive and contribute meaningfully to our shared success.